

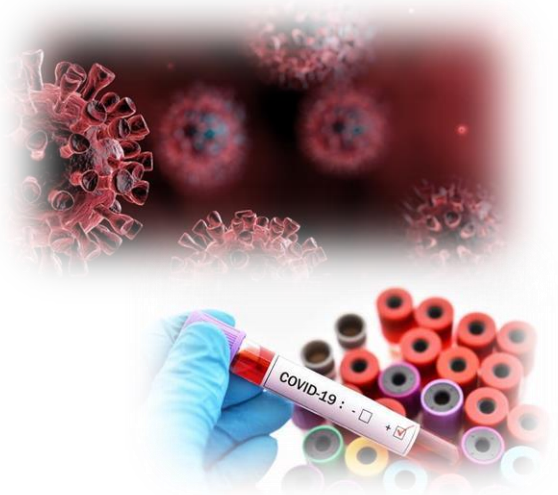


CALL FOR EXPERTS

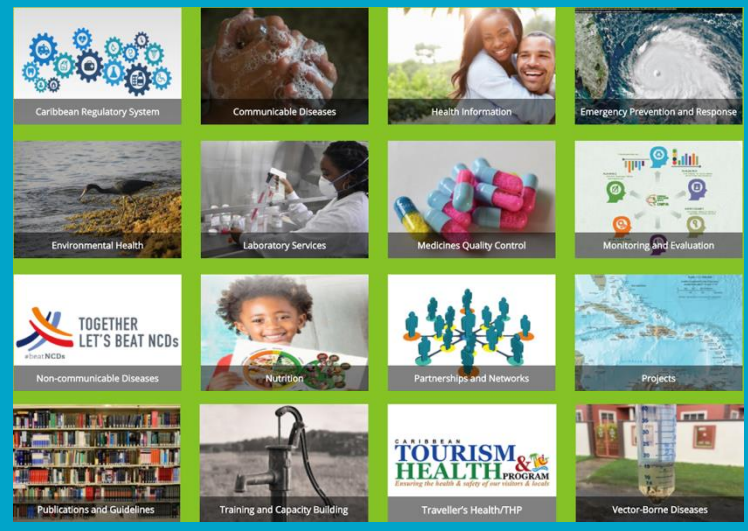
The Caribbean Public Health Agency (CARPHA) in Its Response to COVID - 19 Wants Your Technical Expertise

As we strengthen our COVID-19 response to serve the Caribbean, we are looking for persons who have:

- ✓ Specialized knowledge and skills in Public Health / Communicable Diseases / Epidemiology / Disease Outbreak Investigations and or Emergency Response.
- ✓ Post - graduate university degree in Public Health / Epidemiology / Field Epidemiology or equivalent training and experience.
- ✓ Experience in Emergency Response Deployment.
- ✓ Previous experience as part of an Incident Management Team / Disease Outbreak Response Team.
- ✓ Experience working in the Caribbean region
- ✓ Competence in using statistical and analytical software & epidemiological databases.
- ✓ Experience in database tools and spreadsheets
- ✓ The ability to work in a multidisciplinary team.
- ✓ The ability to work in a constantly dynamic and fluid environment.



Our Expertise



IF YOU HAVE WHAT IT TAKES AND YOUR QUALIFICATIONS MATCH THE ABOVE CRITERIA KINDLY
SUBMIT YOUR APPLICATION TO HRM@CARPHA.ORG



CALL FOR EXPERTS COVID-19 Emergency Response

Background

An outbreak of novel coronavirus causing severe acute respiratory illness was first reported in Wuhan, China, in December 2019. The virus, later named SARS-CoV-2, causes COVID-19 disease. It has since spread globally and was declared a pandemic by the World Health Organization (WHO) on March 11th, 2020. As of early April 2020, approximately one million (1 M) cases and 50,000 deaths have been reported globally.

There are presently over 4,000 cases in 33 Caribbean countries/territories (including 24 CARPHA Member States). The risk of further importation of cases to the rest of the Caribbean remains **Very High**. The Caribbean Regional Coordinating Mechanism for Health Security (RCM-HS), is actively working with Heads of Government and regional partners on a collective approach to the COVID-19 response to reduce disease transmission and minimize morbidity and mortality in the Caribbean population.

Call for Experts

As part of this effort, the Caribbean Public Health Agency (CARPHA) is expanding its Human Resource skills bank to facilitate, as the need arises, the rapid recruitment and deployment of short-term emergency response consultants to CARPHA and its Member States (*see CARPHA – Call for Experts: COVID-19 Flyer*). The Agency is seeking well qualified, skilled and experienced persons, who will be able to deploy regionally within 24 – 48 hours. Specific skills sets required are indicated on the following page. Interested applicants are invited to submit an expression of interest and CV by email to HRM@carpha.org along with the completed ***Emergency Response Deployment – Skills List*** document attached. Applications will be screened on a rolling basis and shortlisted candidates will be contacted and interviewed as the needs arise.

Successful candidates will be placed on a roster and contacted for placement or deployment, depending on required skill sets and availability of the candidate for the proposed deployment period. Persons rostered may be required to undergo online training and orientation. Small teams of respondents (2 - 4 persons) will be deployed at any one time.

Contract Modality and Deployment

Short-term consultancy contracts will be awarded for the duration of the deployment period. CARPHA will coordinate the relevant deployment logistics and make provisions for coverage of a standard consultancy fee, travel costs and per diem.



CARPHA Emergency Response Deployment – Skills List

Name: _____

Date: _____

Please check (✓) in the table below your proficiency level in the listed skills.

SKILL / PROFICIENCY LEVEL	Expert	Intermediate	Basic	Comments
DISEASE SURVEILLANCE AND EPIDEMIOLOGY				
Epidemiological Assessment				
Rapid Health Assessments				
Contact tracing				
Case investigations				
Infection Prevention and Control				
Environmental risk analysis				
Water Sanitation and Hygiene				
Laboratory Assessments (Molecular Diagnostics)				
Health Communications				
CLINICAL				
Health Facility management/processes				
Triaging of patients				
Sample collection (clinical)				
Medicines and health commodities				
Case investigations				
Laboratory Management and Processes				
Training Clinical Staff				
Psychosocial support				
Infection Prevention and Control				
DATA MANAGEMENT				
Database development and Management (Access, Epi Info, others)				
GIS				
Survey development				
Evaluation				
Data Analysis				
OPERATIONS AND MANAGEMENT				
Emergency Management (EOC, Shelter, Incident Command or Control)				
Logistics and Supply Chain				
Cluster System				